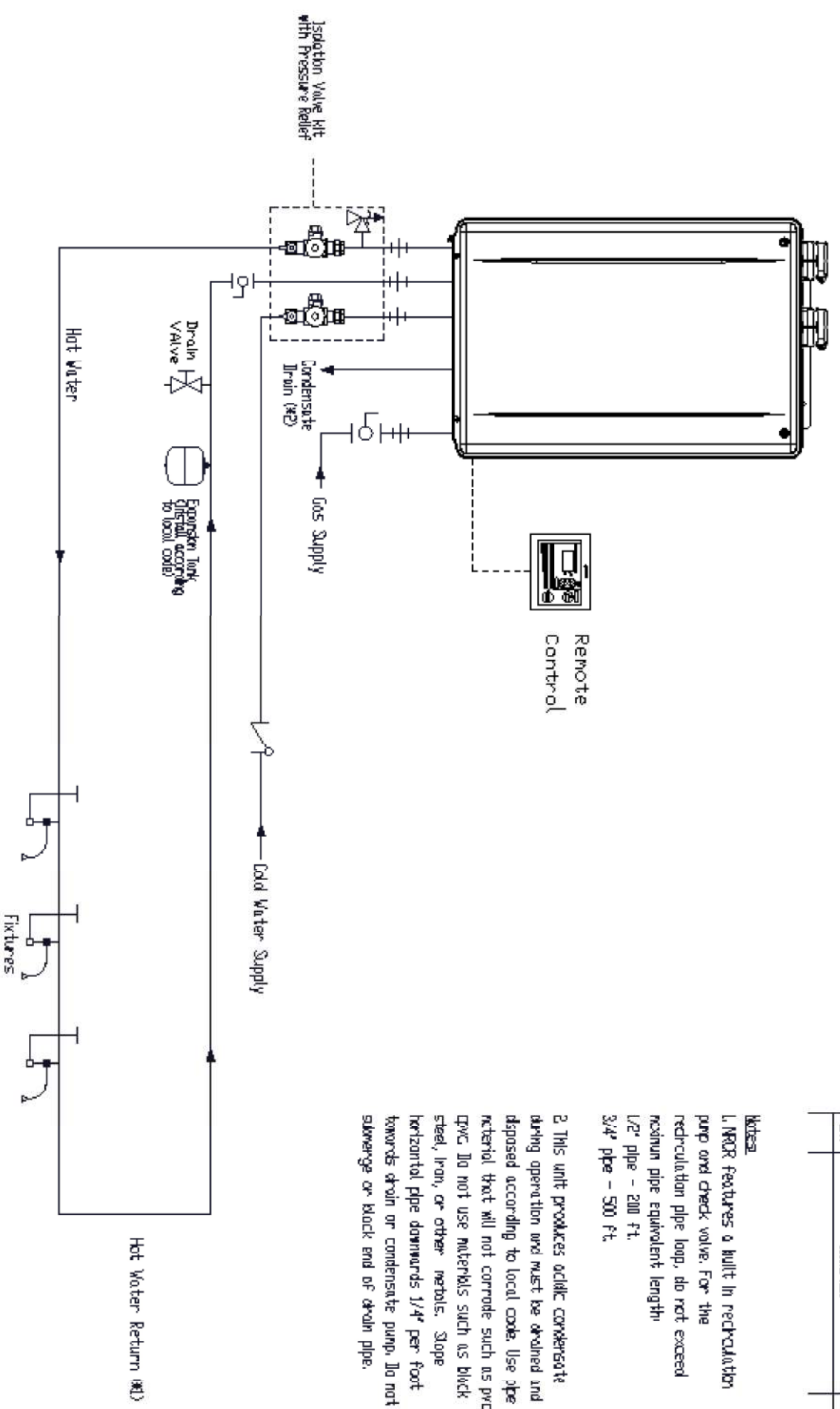


REVISIONS		
REV.	DESCRIPTION	DATE



Notes
 1. NRCR features a built in recirculation pump and check valve. For the recirculation pipe loop, do not exceed maximum pipe equivalent length:
 1/2" pipe - 200 Ft.
 3/4" pipe - 500 Ft.

2. This unit produces acidic condensate during operation and must be drained and disposed according to local code. Use pipe material that will not corrode such as pvc or IPVC. Do not use materials such as black steel, iron, or other metals. Slope horizontal pipe downwards 1/4" per foot towards drain or condensate pump. Do not swerage or block end of drain pipe.

NORRITZ
 1160 Grove Avenue
 Fourth Valley, California 92708
 866-NORRITZ (866-766-7489)
 www.norritz.com

MODEL
 Residential Condensing-
 NRCR

APPLICATION
 Domestic Hot Water
 Recirculation

DRAWING NUMBER
 NRCR-REC

DRAWING DATE
 Oct 2022

Norritz Accessories

	Isolation Valve Kit with Pressure Relief (4 JK-WV-200-3-TH/LF)
	Condensate Neutralizer (4 NC-1S)
	On-Demand Switch (4 # JK-GB) (2 # JK-RS)

Note: This diagram is for reference only. Installation must comply with State and Local Code. All gas and water pipe must be sized correctly to specific length, according to accepted engineering methods or the IPC Code for Hot Water Heaters to operate correctly.

	Shut-off Ball Valve		Airgator Honeywell Model #16006A or 16006C
	Check Valve		Pump
	Union		Mixing Valve
	Pressure Relief Valve (Watts 174A, Zurn P3000PR, Cash Acme F-82)		Thermal Expansion Tank